

## Who is Defense Holdings, Inc.®?

Defense Holdings, Inc.®, the company selected by the Pentagon as its sole photoluminescent contractor for 9/11 reconstruction, offers unmatched technology and engineering expertise, as well as a comprehensive approach that makes it the ideal partner for compliance with local laws. Well-suited to manage all aspects of large-scale projects — from product selection to logistics and installation — DHi guarantees high-quality, fixed-price and aesthetically-pleasing photoluminescent solutions for businesses and institutions.

DHi is the only contractor with a dedicated in-house research and development team as well as engineers and executives with many years of combined experience working with major organizations to optimize the implementation of photoluminescent technologies.

Unlike companies narrowly focused on product sales or installation labor, DHi carefully manages the critical aspects of every project for its clients, from product selection, to installation oversight, logistics and quality control. By working closely with property owners and managers, architects, engineers, interior designers and building tenants to address these issues, we ensure total satisfaction.

With a history of managing a wide variety of large-scale projects for the most demanding clients — including the Pentagon, the Eisenhower Executive Office Building, and the USAA Headquarters Building — DHi is a reliable partner with the knowledge and experience to ensure a smooth process that meets all deadlines, budgets and compliance requirements.

Customer questions or concerns can be addressed to:

**Greg Bender P.E.**  
Vice President, Business Development  
Defense Holdings, Inc. The Idea Company®  
1005 N. Glebe Rd., Suite 500  
Arlington VA 22201-5718  
Tel: (703) 682-5560 ext. 4201  
E-mail: [gbender@dh-inc.com](mailto:gbender@dh-inc.com)

Visit us on the web at [www.dh-inc.com](http://www.dh-inc.com)  
or visit our web store at [www.afterglowdirect.com](http://www.afterglowdirect.com)

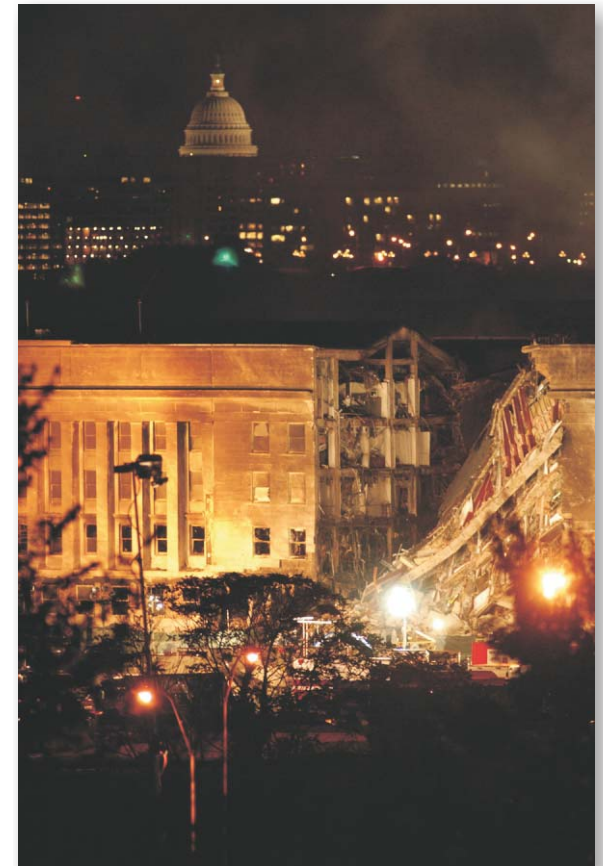
DCN024.20090713-ALWAYS\_READY  
© 2009 Defense Holdings, Inc.®



## Presents



## Always Ready In An Emergency



## Background

The industry press has credited photoluminescent (PL) pathway markings installed in the World Trade Center after the 1993 terrorist attack with significantly improving evacuation time on 9/11 — saving lives.

## The Problem

Terrorist strikes against commercial targets, embassies, and other government buildings have exposed weaknesses in widely-used safety systems, and have forced officials to consider new approaches to saving lives during the chaos of terror attacks and other emergencies.

## Tragic Lessons Learned

- **Fact:** Even today, most commercial buildings across the U.S. still have insufficient emergency lighting, even though they meet the latest local fire codes.
- **Fact:** Illuminated EXIT signs located near ceiling level are likely to be obscured in a smoky fire.
- **Fact:** Improper or deferred maintenance of electrical emergency lights PLUS inadequate oversight EQUALS less than 100% reliability in current systems.
- **Fact:** Primary and backup electrical systems can fail completely in an emergency due to significant damage, excessive heat, or water.
- **Fact:** When emergency exit systems fail, the resulting confusion, disorientation and panic COSTS LIVES.

## Federal and Commercial PL Installations Today—a Growing Mandate

In November 2004, DHi began fulfilling a \$6.5 M Federal contract to install PL exit path marking in the Pentagon. In addition, the company has installed city-approved PL materials in the stairwells of over 100 Class E office buildings in New York City, fulfilling the safety mandate specified in Local Law 26. Other major jurisdictions are studying New York's new standards, and New Jersey and California are establishing their own civil codes that demand the installation of PL safety solutions.

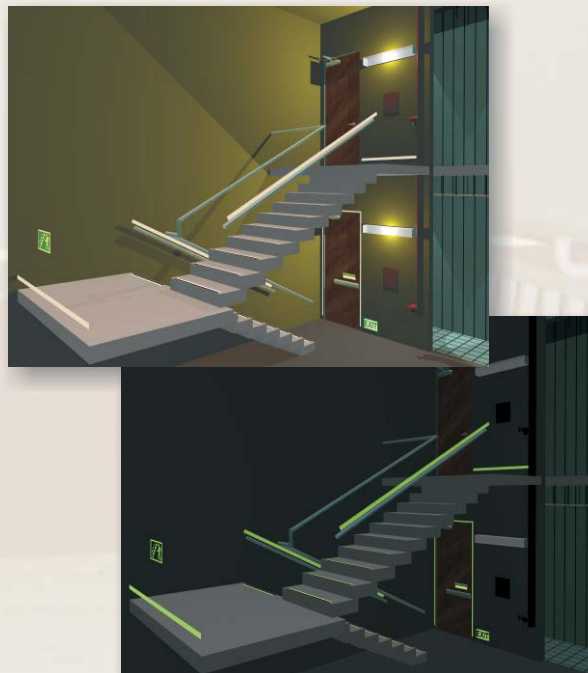
## Photoluminescent Low Location Exit Path Marking Systems (LLEPM)

DHi is now installing revolutionary, high-performance, PL LLEPM systems in Federal and commercial buildings that meet today's revised codes for top-quality exit-path marking systems that clearly show evacuation routes and guides emergency response teams.

## Why LLEPM?

- No external power source required
- Activated by ambient lighting
- Fully charges and recharges in minutes
- Can be recharged over and over
- Nonradioactive and nonhazardous
- Extremely bright — visible to dark-adapted eyes
- Extremely durable
- Maintenance free — savings in money and time
- Very long service life — 20+ years
- 100% reliable

## Post 9/11: Part of the Solution



## LLEPM and Your Building

- LLEPM installations are lifesavers in:
  1. **Stairwells.** Everyone above or below the ground floor must evacuate through stairwells.
  2. **Corridors.** People evacuating offices, public areas, and conference rooms must travel through corridors to access stairwell exits.
  3. **Group Offices and Public Areas.** Large, open spaces are often subdivided by cubicles and furniture systems. In an emergency, when lighting fails, these can suddenly be transformed into mazes and dead ends.
  4. **Common Areas.** Conference rooms, basements, storage space, and other areas dependent on powered safety systems are inherently vulnerable to electrical failure.
  5. **Equipment Spaces.** Emergency responders, including firefighters and rescue crews, must be able to quickly identify and locate power sources, supply centers, pipe-ways, shut-off valves, and emergency exits.
- In some jurisdictions, photoluminescent LLEPM systems are code optional; therefore there is flexibility regarding installation.
- Federal institutions considering incorporating LLEPM systems generally base their design on the American Society for Testing and Materials (ASTM) Guideline 2030 on LLEPM.

## DHi — Your Number One Choice for Photoluminescent Safety Solutions®

- Custom-tailored exit-marking system design
- Highly accurate cost estimation
- Top-quality materials appropriate to each job
- Specialized, experienced installers